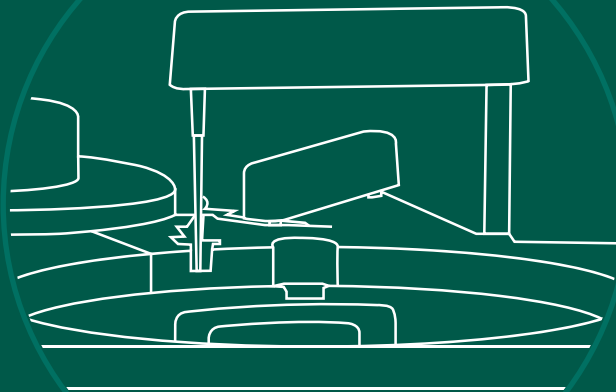


# RX SERIES ANALYSER OVERVIEW

EXCELLENCE IN CLINICAL CHEMISTRY TESTING



**RAN**DOX

**01** INTRODUCTION

---

**02** THE RX SERIES

---

**04** RX ALTONA

---

**06** RX MONACO

---

**08** RX DAYTONA+

---

**10** RX IMOLA

---

**12** RX MODENA

---

**14** THE RX SERIES TEST MENU

---

**16** THE RX SERIES A-Z TEST MENU

---

**20** RANDOX - A GLOBAL DIAGNOSTIC  
SOLUTIONS PROVIDER

---

**21** CONTACT US



## INTRODUCTION TO THE RX SERIES

Patient care is the primary focus of clinical chemistry testing and Randox has developed the RX series of clinical chemistry analysers for high quality semi-automated and fully automated testing.

With placements in over 120 countries worldwide, the RX series continues to revolutionise a variety of laboratory types including:

- Clinical Laboratories
- Hospital Laboratories
- University & Educational Institutes
- Research Laboratories
- Veterinary Laboratories
- Food & Wine Laboratories

The RX series combines robust hardware and intuitive software with the world leading RX series test menu, including routine chemistries, specific proteins, lipids, therapeutic drugs, drugs of abuse, antioxidants and diabetes testing.

Renowned for quality and reliability, the RX series has one of the most extensive dedicated clinical chemistry test menus on the market guaranteeing real cost savings through consolidation of routine and specialised tests onto a single platform. This extensive dedicated test menu of high quality reagents guarantees excellence in patient care ensuring unrivalled precision and accuracy reducing costly test re-runs or misdiagnosis and offering complete confidence in results.

# »» THE RX SERIES

## 170 photometric tests per hour

The RX monaco is a fully automated solution for low to mid volume clinical chemistry testing offering the ultimate in convenience, performance and confidence. At optimal configuration, the RX monaco performs 170 tests per hour providing cost effective, high quality testing

**rx**  
m o n a c o



## 400 photometric tests per hour or 560 tests per hour with ISE

The RX imola is a cost effective system that delivers consistent high quality results. Capable of handling the workload of a medium to high throughput laboratory the RX imola provides rapid, comprehensive testing on a small footprint analyser. The RX imola is a fully automated system with random access and STAT sampling functionality, boosting productivity and saving time when it matters most

**rx**  
i m o l a







### **A high performance semi-automated analyser**

The RX altona has been developed with the user in mind by incorporating a responsive touch-screen display. The sleek ergonomic design boasts intuitive user-friendly software allowing for test menu personalisation for ease of use. The RX altona is capable of high standard, precise results at a competitive price per test



### **270 photometric tests per hour or 450 tests per hour with ISE**

The RX daytona+ is a fully automated, benchtop, clinical chemistry analyser capable of performing high quality testing on a compact analyser; for accurate results you can trust. The most versatile analyser in its class, the RX daytona+ combines robust hardware and intuitive software with the world leading RX series test menu for unrivalled performance



### **800 photometric tests per hour or 1200 tests per hour with ISE**

Capable of running up to 1,200 tests per hour, with direct HbA1c testing abilities, the RX modena consolidates all your assay requirements onto one intuitive platform. The RX modena boasts icon based, interactive touch-screen technology adding a modern flair to your laboratory





## A high performance, semi-automated clinical chemistry analyser

The RX altona shines a new light on semi-automated clinical chemistry testing with increased auto-functionality and groundbreaking technology. Revolutionising the RX series with its bold look, innovative design, and outstanding performance, it sets the benchmark for the next generation of the RX series clinical chemistry analysers. The RX altona is capable of high standard, precise results at a competitive price per test.



### MAIN FEATURES OF THE RX ALTONA

- Large 7" touch screen
- Icon based software
- USB 2.0 port
- Minimal daily maintenance
- Automatic flagging of testing errors
- Switch between multiple languages
- Advanced password protection function
- Ability to run flow cell and cuvette mode
- Advanced QC software
- Humidity and temperature sensors
- One year warranty as standard plus unrivalled technical support from Randox

4



### BENEFITS OF THE RX ALTONA

#### Extensive dedicated RX series test menu

- Expand testing capabilities on one intuitive compact platform with the world leading RX series test menu
- Ability to perform both routine and specialised testing, including routine chemistries, lipids, antioxidants, cardiac and diabetes testing
- Capable of analysing a variety of sample types, including: Serum, Plasma, Urine, Wine, CSF

#### Optimum Performance

- Automatic flagging of errors ensures timely troubleshooting for accurate results
- Advanced QC software allows performance to be monitored at all times
- Advanced password protection function ensures confidentiality of results

#### Flexibility

- Extremely small footprint, takes up minimal space in laboratory and is easily transported
- Up to 10 wavelengths can be generated via solid state filter device (340-700nm standard)
- Ability to run both flow cell and cuvette mode
- 3 levels of password protection available enabling different user access levels

#### Excellent Functionality

- Multiple languages available for extra convenience
- Intuitive icon based, touch screen technology for ease of use
- USB port for importing Randox defined test menus, and exporting patient, QC and Calibration results
- Minimal maintenance required, simple on screen instructions will guide the user through maintenance steps required

## SYSTEM OVERVIEW



### Cuvettes & Flow Cell

- Option to run flow cell or cuvette mode ensures a maximum number of chemistries can be performed on one system
- Flow cell washing avoids contamination ensuring accurate results are produced



### USB Port

- USB port for importing Randox-defined test menus and exporting patient, QC and calibration results
- Enables the user to quickly export results from the analyser and convert into excel format



### LCD Touch-Screen Display

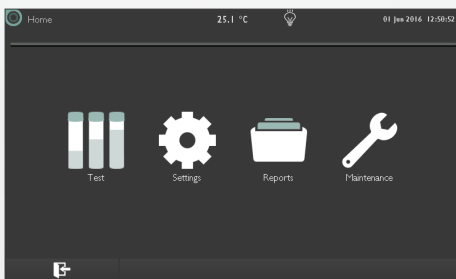
- Quality display on a large 7" LCD touch-screen responsive even when wearing lab gloves
- Simple on screen icon based navigation allows the user to efficiently complete their testing with minimal effort



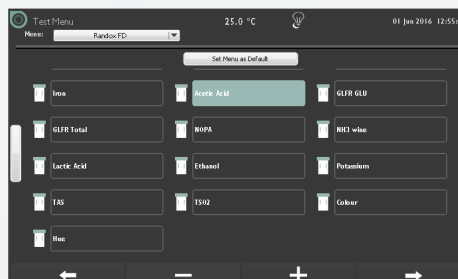
### Advanced Password Protection

- Advanced password protection functions for analyser setup, assay management and QC result inclusion/exclusion
- This gives laboratories confidence that their results are well protected on this system and only those who are authorised can gain access

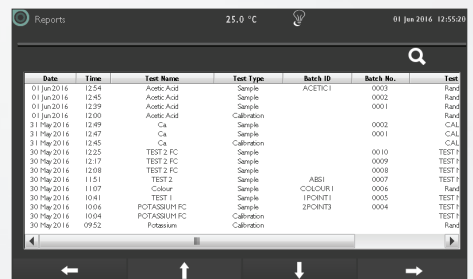
## SOFTWARE



Home Screen



Parameter Screen



Reports Screen

## ORDERING INFORMATION

RX altona analyser	RX6015
RX altona cuvette incubator	A702-496



## A compact fully automated solution for high quality clinical chemistry testing

The RX monaco is a fully automated, cost effective solution for low to mid volume clinical chemistry testing offering the ultimate in convenience, performance and confidence.

The RX series test menu allows for complete consolidation of routine and specialised testing onto one efficient, easy to use platform.



### MAIN FEATURES OF THE RX MONACO

- 170 photometric tests per hour
- 120 semi-permanent cuvettes
- Low water consumption of 5.5 litres per hour at maximum throughput
- Grating spectrophotometry system generating 12 wavelengths ranging from 340-800nm
- Sample Dead Volume 100µl
- Minimum reaction volume 150µl
- Easy to use Windows® based software
- One year warranty as standard plus unrivalled technical support from Randox

6



### BENEFITS OF THE RX MONACO

#### Robust, Reliable, Easy-to-Use

- Low maintenance requirements
- Online help guide available to assist user with analyser functions, troubleshooting and maintenance queries
- Integrated barcode readers for reagent and sample identification
- User friendly Microsoft windows® based software
- Generation of Levey-Jennings charts, calibration curves and QC statistics

#### Extensive dedicated Test Menu

- Extensive test menu covering routine chemistries, specific proteins, lipids, therapeutic drugs, drugs of abuse, antioxidants, diabetes and veterinary testing
- Capable of analysing a variety of sample types: Serum, Plasma, Urine, Supernatants

#### Optimum Performance

- Cuvette check function ensures only clean and viable reaction vessels are used
- Built in inventory management system automatically reports remaining reagent volume
- Sample volume of just 3 - 35µl (0.1µl increments)

#### Flexibility

- Available as a bench top or floor standing model
- User defined QC multi point rules
- Calibration options include 1 point, 2 point, multi-point & non-linearity method
- QC history can be viewed
- 3 levels of password protection available enabling different levels of access

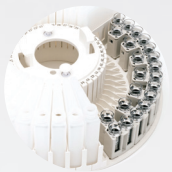


## SYSTEM OVERVIEW



### Wash Station

- 12 stage washing system. Includes acid, alkali and pure water wash steps
- Independent stirring system automatically rinsed with purified water to reduce carryover



### Reagent & Sample Carousel

- Shared reagent and sample carousel with 66 user defined positions
- Cooled reagent and sample carousel (removable) ensures reagent, controls and calibrators can be stored on-board the analyser without compromising stability



### Reaction Carousel

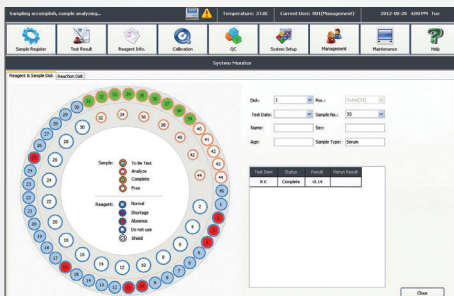
- Reaction system with 120 semi-permanent optical plastic cuvettes
- 15 second cycle time



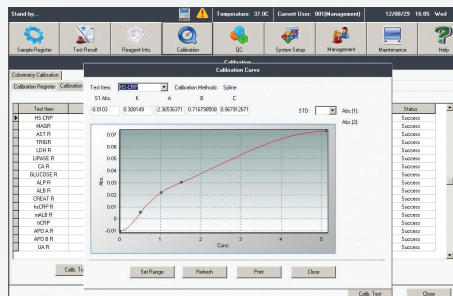
### Pipette

- Single reagent and sample pipette with liquid level detection and collision protection
- Rinsed inside and out (warm water rinsing)

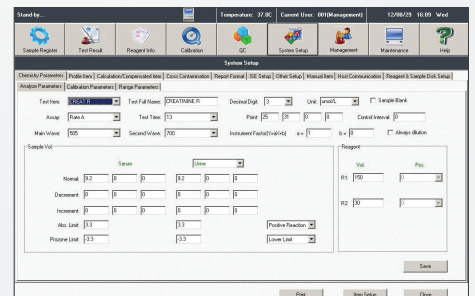
## SOFTWARE



Run Monitor Screen



Calibration Screen



Parameter Screen

## ORDERING INFORMATION

RX monaco analyser (benchtop)	RX5000
RX monaco analyser with stand	RX5001





## A fully automated clinical chemistry analyser with unrivalled performance

The RX daytona+ is a fully automated, random access, bench top analyser. Its comprehensive and flexible test menu allows the consolidation of a wide range of tests including routine chemistries, specific proteins, therapeutic drugs and drugs of abuse on one easy to use platform.



### MAIN FEATURES OF THE RX DAYTONA+

- 270 photometric tests per hour
- Optional ISE unit which enables a total throughput of 450 tests per hour
- 72 semi-permanent cuvettes on-board with cuvette check function and 12 stage washing
- 12 wavelength options ranging from 340-800nm
- Low water consumption of 5 litres per hour at maximum throughput
- Standard and Paediatric sample cups can be used on-board
- Sample Dead Volume 100µl for primary samples
- Sample Dead Volume 50µl for paediatric samples
- Minimum reaction volume 100µl
- One year warranty as standard plus unrivalled technical support from Randox

### BENEFITS OF THE RX DAYTONA+

#### Optimum Performance

- Built in inventory management system automatically reports remaining reagent volume
- Separate sample and reagent pipettes including liquid level sensors, crash protection and clot detection
- Dual 5 speed stirrers optimised for each assay ensuring better performance
- Sample volume of just 1.5µl (0.1µl increments)

#### Excellent Functionality

- User friendly Microsoft windows® based software.
- Generation of Levey-Jennings charts, calibration curves and QC statistics
- Minimal maintenance required
- Integrated barcode readers for reagent and sample identification

#### Extensive Dedicated Test Menu

- Extensive test menu covering routine chemistries, specific proteins, lipids, therapeutic drugs, drugs of abuse, antioxidants, diabetes and veterinary testing
- Capable of analysing a variety of sample types: Serum, Plasma, Urine, Cerebrospinal Fluid, Supernatants

#### Flexibility

- Cooled reagent carousel ensures reagents can be stored on-board the analyser without compromising stability
- Option to use standard sample cups or paediatric cups for small sample volumes
- Calibration options include: Factor, Linear, Point to point, Log-logit, Exponential, Spline and Spline 2
- QC history can be viewed
- 3 levels of password protection available enabling different levels of access

## SYSTEM OVERVIEW



### Reagent Carousel

- Versatile reagents carousel with 50 cooled positions
- Reagent carousel is removable



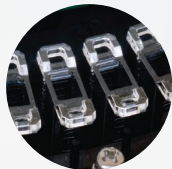
### Wash Station

- 12 stage washing process
- Water consumption is maximum of 5 litres per hour



### Sample Carousel

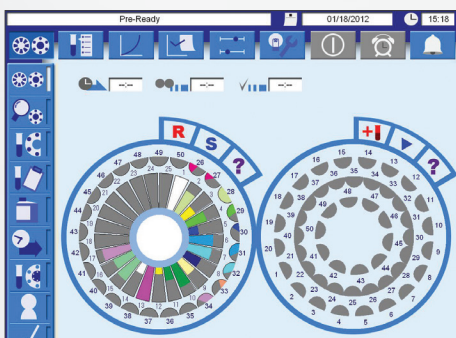
- Universal sample carousel with 40 positions and 10 control/calibrator positions
- Sample carousel is removable



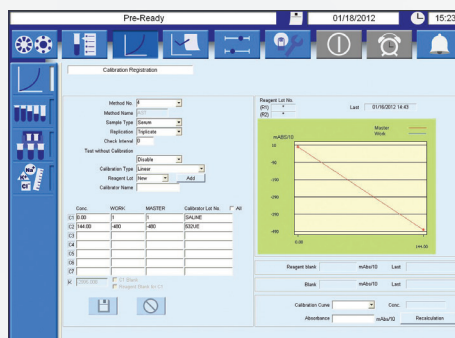
### Cuvettes

- 72 semi-permanent reaction cuvettes
- Cuvette check function ensures only clean and viable reaction vessels are used

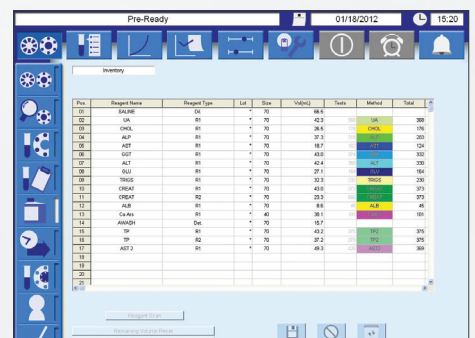
## SOFTWARE



Run Monitor Screen



Calibration Screen



Inventory Screen

## ORDERING INFORMATION

RX daytona+ analyser with ISE

RX4040

RX daytona+ analyser without ISE

RX4041



## Rapid, comprehensive clinical chemistry testing

The RX imola is a cost effective system that delivers consistent high quality results. Capable of handling the workload of a medium to high throughput laboratory the RX imola provides rapid, comprehensive testing on a small footprint analyser.



### MAIN FEATURES OF THE RX IMOLA

- 400 photometric tests per hour
- 560 tests per hour including ISE
- 90 permanent Pyrex® cuvettes, with 8 stage washing
- 12 wavelength options ranging from 340-800nm
- Water consumption of 18 litres per hour
- Standard and Paediatric sample cups can be used on-board
- Sample Dead Volume 100µl for primary samples
- Sample Dead Volume 50µl for paediatric samples
- One year warranty as standard plus unrivalled technical support from Randox

10



### BENEFITS OF THE RX IMOLA

#### Optimum Performance

- Long life span cuvettes of approx. 5 years
- Built in inventory management system to monitor reagent volumes and remaining number of tests
- Minimum reaction volume 150µl
- Capable of a medium to high throughput
- Sample volume of just 2-35µl (0.1µl increments)

#### Extensive Dedicated Test Menu

- Extensive test menu covering routine chemistries, specific proteins, lipids, therapeutic drugs, drugs of abuse, antioxidants, diabetes and veterinary testing.
- Capable of analysing a variety of sample types: Serum, Plasma, Urine, Cerebrospinal Fluid, Supernatants

#### Excellent Functionality

- User friendly Microsoft windows® based software
- Generation of Levey-Jennings charts, calibration curves and QC statistics
- Daily maintenance takes less than 5 minutes
- Integrated barcode readers for reagents and sample management

#### Flexibility

- Calibration options include: Factor, Linear, 2 Point, Point to point, Spline, Log-logit and Exponential.
- QC history can be viewed
- 3 levels of password protection available enabling different levels of access

## SYSTEM OVERVIEW



### Reagent Carousel

- 60 cooled reagent positions on reagent carousel ensures reagents can be stored on-board the analyser without compromising stability
- 20 cooled positions available for controls and calibrators



### Wash Station

- 8 stage washing system
- Includes acid, alkali and pure water wash steps
- Cuvettes have curved inner surface to aid efficient cleaning and drying



### Sample Carousel

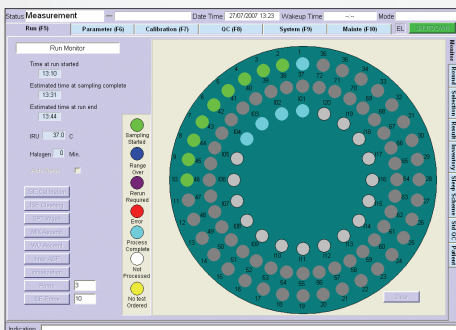
- Universal sample carousel with 72 positions
- Reagent and sample carousels are removable



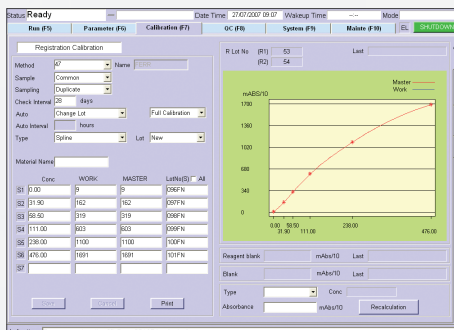
### Pipette

- Dual micro-pipettes with liquid level sensors, clot and bubble detection
- Dual 5 speed stirrers optimised for each assay ensuring better performance

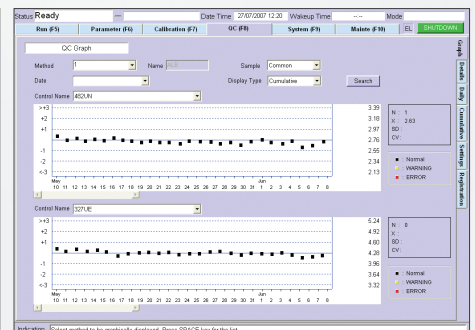
## SOFTWARE



Run Monitor Screen



Calibration Screen



Quality Control Screen

## ORDERING INFORMATION

RX imola analyser (comes with ISE as standard)

RX4900



## A superior high throughput, fully automated clinical chemistry analyser

The RX modena is a high volume, floor standing fully automated clinical chemistry analyser. With a throughput of 1,200 tests per hour, combined with the ever expansive, unrivalled RX series test menu, the RX modena offers a winning combination for large, multi-disciplinary laboratories.



### MAIN FEATURES OF THE RX MODENA

- 800 photometric tests per hour
- 1,200 tests per hour including ISE
- Fully automated on-board haemolysis function for HbA1c testing
- Continuous loading hatch for STAT samples
- Reagent carousel with 100 cooled positions
- Removable sample carousel with 94 sample positions and 10 positions for controls and calibrators
- Water consumption of 15L per hour
- Advanced QC capabilities – daily, monthly and batch QC with data archiving, Levey Jennings charts, Automatic QC and Automatic calibration
- Minimal maintenance required
- One year warranty as standard plus unrivalled technical support from Randox

12



### BENEFITS OF THE RX MODENA

#### Optimum Performance

- Built in inventory management system automatically calculates remaining reagent volume and the number of tests available, alert for shortage, expired reagent and expired calibration
- Automatic test re-run function with diluted, reduced or increased sample volume saves time and reduces risk of human error
- Automatic sample dilution

#### Extensive Dedicated Test Menu

- Large range of tests available, including routine and unique assays optimised for superior performance
- Ability to run specific proteins removes the need for a separate nephelometry system

#### Excellent Functionality

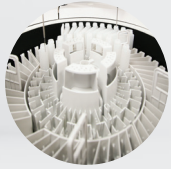
- User friendly Microsoft windows® based software
- Interactive touch-screen technology
- Barcode readers for both sample and reagent identification
- Simple twice yearly preventative maintenance

#### Flexibility

- 13 wavelengths generated via diffraction grating: 340, 380, 415, 450, 478, 510, 546, 570, 600, 660, 700, 750 and 800nm
- Capable of running end point, 2 point end rate, 2 point rate and ISE
- 7 different calibration options available including: Factor, Linear, Point to point, Log-logit, Exponential, Spline and Spline 2



## SYSTEM OVERVIEW



### Reagent Carousel

- Reagent carousel with 100 cooled positions
- Dedicated twin reagent micropipette & dedicated sample pipette both equipped with liquid level sensors and crash detection
- Automatic barcode reagent identification



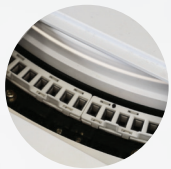
### Wash Station

- 7 stage washing system
- Economic platform with water consumption of less than 15 litres per hour at peak use



### Sample Carousel

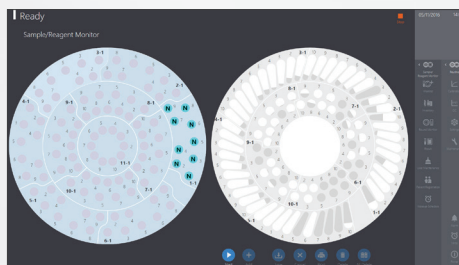
- Removable sample carousel with 94 positions for samples, and 10 positions for controls and calibrators
- Sample pipette equipped with bubble detection and 3 levels of clot detection



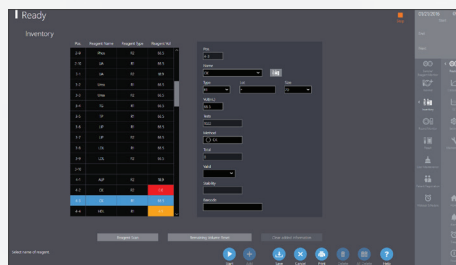
### Reaction System

- 153 cuvettes onboard with cuvette check function ensuring only clean and viable reaction vessels are reused
- Separate sample and reagent pipettes to minimise carryover

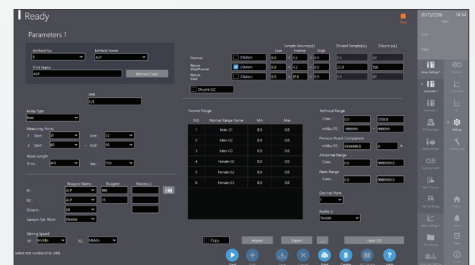
## SOFTWARE



Run Monitor Screen



Calibration Screen



Parameter Screen

## ORDERING INFORMATION

RX modena analyser (comes with ISE as standard)

RX9000

# » THE RX SERIES TEST MENU



## CLINICAL

### AUTOIMMUNE:

Complement Component 3  
Complement Component 4  
CRP  
CRP Full Range (0.3-160mg/l)  
CRP High Sensitivity  
IgA  
IgE  
IgG  
IgM  
Rheumatoid Factor

### BASIC METABOLIC PROFILE:

Calcium  
CO<sub>2</sub> Total  
Chloride  
Creatinine  
Glucose  
Potassium  
Sodium  
Urea

### BONE PROFILE:

Alkaline Phosphatase  
Calcium  
Phosphorus  
Total Protein

### CARDIAC:

Cholesterol  
CK-MB  
CK-NAC  
CRP  
CRP Full Range (0.3-160mg/l)  
CRP High Sensitivity  
Digoxin  
Direct HDL Cholesterol  
Direct LDL Cholesterol  
HDL3  
H-FABP  
Homocysteine  
Lipoprotein (a)  
Myoglobin  
sLDL  
Triglycerides  
TxB Cardio

**COMPREHENSIVE METABOLIC PROFILE:**  
Albumin  
Alkaline Phosphatase  
ALT

### AST (GOT)

Direct Bilirubin  
Calcium  
Chloride  
CO<sub>2</sub> Total  
Creatinine  
Glucose  
Lactate  
Potassium  
Sodium  
Total Bilirubin  
Total Protein  
Urea

### DIABETES:

Adiponectin  
Cholesterol  
Creatinine  
Cystatin C  
Direct HDL Cholesterol  
Direct LDL Cholesterol  
Fructosamine  
Glucose  
Glycerol  
HbA1c/Hb  
Microalbumin  
NEFA (Non-Esterified Fatty Acids)  
Ranbut (Hydroxybutyrate)  
Total Protein  
Triglycerides  
Urinary Protein

### ELECTROLYTES:

Calcium  
Chloride (Nondirect)  
CO<sub>2</sub> Total  
Lithium  
Magnesium  
Potassium (Nondirect)  
Sodium (Nondirect)

### HAEMOLYTIC ANAEMIA:

G6P-DH  
Haptoglobin  
LDH

### HEPATIC FUNCTION:

Albumin  
Aldolase  
Alkaline Phosphatase  
Alpha-1 Antitrypsin  
ALT

### Ammonia

AST (GOT)  
Bile Acids  
Cholinesterase  
Complement Component 3  
Complement Component 4  
Direct Bilirubin  
Gamma GT  
GLDH  
Glycerol  
Haptoglobin  
IgA  
IgG  
IgM  
Iron (UIBC)  
LAP  
LDH  
Total Bilirubin  
Total Protein  
Transferrin  
Transthyretin (Prealbumin)

### INFLAMMATION AND INFECTION:

Alpha-1 Acid Glycoprotein  
ASO  
CRP  
Lactate  
Rheumatoid Factor

### LIPIDS:

Apolipoprotein A-I  
Apolipoprotein AII  
Apolipoprotein B  
Apolipoprotein CII  
Apolipoprotein CIII  
Apolipoprotein E  
Cholesterol  
Direct HDL Cholesterol  
Direct LDL Cholesterol  
HDL3  
Lipoprotein (a)  
sLDL  
Triglycerides

### NEONATAL SCREENING:

Alpha-1 Antitrypsin  
CRP  
CRP Full Range (0.3-160mg/l)  
CRP High Sensitivity  
IgE  
Transthyretin (Prealbumin)

### NEUROLOGICAL DISORDERS (CSF):

IgA  
IgG  
IgM

### NUTRITIONAL STATUS:

Albumin  
Copper  
Ferritin  
Iron  
Iron (UIBC)  
Lipase  
Magnesium  
Potassium  
TIBC  
Transferrin  
Transthyretin (Prealbumin)  
Zinc

### PANCREATIC FUNCTION:

Amylase  
Glucose  
LDH  
Lipase  
Pancreatic Amylase

### RENAL FUNCTION:

Albumin  
Ammonia  
Beta-2 Microglobulin  
Calcium  
Chloride  
Creatinine  
Cystatin C  
Glucose  
HbA1c/Hb  
IgG  
LDH  
Magnesium  
Microalbumin  
Potassium  
Sodium  
Phosphorus (Inorganic)  
Urinary Protein  
Urea  
Uric Acid



## VETERINARY

Albumin	Cholesterol	Glucose	Potassium
Alkaline phosphatase	Cholinesterase (Butyryl)	Glycerol	Ranbut (Hydroxybutyrate)
ALT (GPT)	CK-NAC	HDL	Ransel (Glutathione peroxidase)
Aldolase	CO2 Total	Iron (UIBC)	Ransod (Superoxide dismutase)
Ammonia	Copper	Lactate	Sodium
Amylase	Creatinine	Lactate dehydrogenase	Total Protein
AST (GOT)	Canine CRP	LDL	Triglycerides
Bile acids	CRP	Lipase	Urea
Bilirubin	Fructosamine	Magnesium	Uric Acid
Calcium	Gamma-GT	NEFA (Non-esterified fatty acids)	Urinary protein
Chloride	GLDH	Phosphorus (Inorganic)	Zinc



## TOXICOLOGY

<b>THERAPEUTIC DRUGS:</b>	Phenobarbitol	<b>DRUGS OF ABUSE:</b>	Ecstasy
Acetaminophen	Phenytoin	Amphetamines	EDDP
Carbamazepine	Salicylate	Barbiturates	Ethanol
Digoxin	Theophylline	Benzodiazepines	Methadone
Gentamicin	Valproic Acid	Cannabinoids	Opiates
Lithium		Cocaine metabolite	



## PROTEINS

<b>SPECIFIC PROTEINS:</b>	Apolipoprotein E	CRP High Sensitivity	IgG
Alpha-1 Antitrypsin	ASO	Cystatin C	IgM
Alpha-1 Acid Glycoprotein	Beta-2 Microglobulin	Ferritin	Lipoprotein (a)
Apolipoprotein A-1	Ceruloplasmin	Fructosamine	Microalbumin
Apolipoprotein AII	Complement Component 3	Haptoglobin	Myoglobin
Apolipoprotein B	Complement Component 4	HbA1c/Hb	Rheumatoid Factor
Apolipoprotein CII	CRP	IgA	Transthyretin (Prealbumin)
Apolipoprotein CIII	CRP Full Range (0.3-160mg/l)	IgE	Transferrin



## RESEARCH

<b>ANTIOXIDANTS:</b>	Transferrin	Glucose/fructose	<b>BIOTECHNOLOGY:</b>
Albumin	Uric Acid	Lactic acid	Glutamate
Bilirubin		Malic acid	Glutamine
Ferritin	<b>FOOD AND</b>	NOPA	
Glutathione Reductase	<b>WINE TESTING:</b>	Potassium	<b>SPECIALITY:</b>
Ransel (Glutathione Peroxidase)	Acetic acid	TAS	Acid phosphatase
Ransod (Superoxide Dismutase)	Ammonia	Total SO <sub>2</sub>	
TIBC	Copper		
Total Antioxidant Status	Ethanol		

# » THE RX SERIES A-Z TEST MENU



RX ALTONA

Acetic Acid	Cholinesterase	Lactate
Acid Phosphatase	CK-MB	Lactic Acid
Albumin	CK-NAC	Lipase
Aldolase	CO <sub>2</sub> Total	Magnesium
Alkaline Phosphatase	Copper	Malic Acid
ALT (GPT)	Creatinine	Microalbumin
Ammonia	Cystatin C	NEFA (Non-esterified fatty acids)
Amylase	D-3-Hydroxybutyrate (Ranbut)	Phosphorus (Inorganic)
Apolipoprotein A-I	Direct HDL Cholesterol	Potassium
Apolipoprotein B	Direct LDL Cholesterol	Sodium
ASO	G-6-PDH	Superoxide Dismutase (Ransod)
AST (GOT)	Gamma-GT	Total Antioxidant Status
Beta-2 Microglobulin	GLDH	Total Protein
Bile acids	Glucose Oxidase	Triglycerides
Bilirubin (Direct)	Glucose Hexokinase	Urea
Bilirubin (Total)	Glutathione Peroxidase (Ransel)	Uric Acid
Calcium	Glutathione Reductase	Urinary protein
Chloride	Glycerol	Zinc
Cholesterol	Iron	

# » THE RX SERIES A-Z TEST MENU



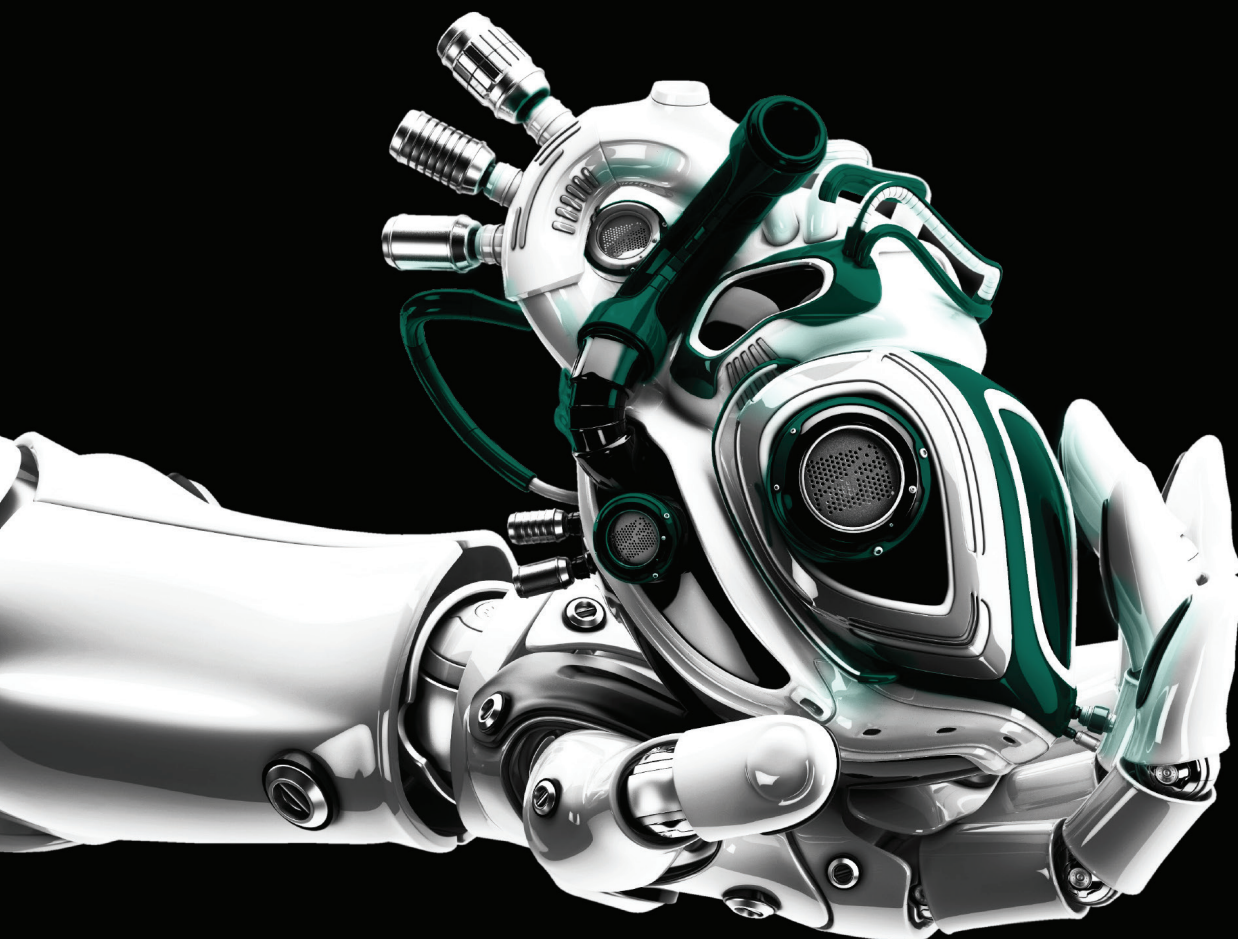
## AUTOMATED

Acetaminophen	Ceruloplasmin	Glutathione Peroxidase (Ransel)	NEFA (Non-Esterified Fatty Acids)
Acetic Acid	Chloride (Non-Direct)	Glutathione Reductase	Opiates
Acid phosphatase	Cholesterol	Glycerol	Pancreatic Amylase
Adiponectin	Cholinesterase (Butyryl)	Haptoglobin	Phenobarbitol
Albumin	CK-MB	HbA1c/Hb	Phenytoin
Aldolase	CK-NAC	HDL3	Phosphorus
Alkaline Phosphatase	CO2 Total	HDL Cholesterol (Direct)	Potassium (Non-Direct)
Alpha-1 Acid Glycoprotein	Cocaine metabolite	Heart-Type Fatty Acid Binding Protein (H-FABP)	Rheumatoid Factor
Alpha-1 Antitrypsin	Complement Component 3		Salicylate
ALT (GPT)	Complement Component 4	Homocysteine	sLDL
Ammonia	Copper	Hydroxybutyrate (Ranbut)	Sodium (Non-Direct)
Amphetamines	Creatinine	IgA	Superoxide Dismutase (Ransod)
Amylase	CRP	IgE	Theophylline
Apolipoprotein A-I	CRP Full Range (0.3-160mg/l)	IgG	TIBC
Apolipoprotein AII	CRP High Sensitivity	IgM	Total Antioxidant Status
Apolipoprotein B	Cystatin C	Iron	Total Protein
Apolipoprotein CII	Digoxin	Lactate	Transferrin
Apolipoprotein CIII	Ecstasy	LAP	Transthyretin (Prealbumin)
Apolipoprotein E	EDDP	LDH	Triglycerides
ASO	Ethanol	LDL Cholesterol (Direct)	TxB Cardio
AST (GOT)	Ferritin	Lipase	Urea
Barbiturates	Fructosamine	Lipoprotein (a)	Uric Acid
Benzodiazepines	G6P-DH	Lithium	Urinary Protein
Beta-2 Microglobulin	Gamma GT	L-Lactic Acid	Valproic Acid
Bile Acids	Gentamicin	Magnesium	Zinc
Bilirubin (Direct & Total)	GLDH	Malic Acid	
Calcium	Glucose	Methadone	
Canine CRP	Glucose/Fructose	Microalbumin	
Cannabinoids	Glutamate	Myoglobin	
Carbamazepine	Glutamine		

Product availability may vary from country to country. Please refer to individual product brochures for analyser specific test menus.



# » TECHNOLOGY AT THE HEART OF THE LABORATORY



In choosing to purchase any RX series analyser from Randox you are partnering with a company that has over 30 years' experience in the IVD industry and clinical chemistry analyser placements in over 120 countries worldwide. Every customer's needs are different and Randox sales staff and distributor partners will work with your laboratory to create a bespoke package to suit your requirements. Randox Laboratories provide customers with an unrivalled technical support service.

Once you have ordered your RX series analyser, you can register your product with our customer support team who will answer any technical queries you might have.

For more information contact your local representative, or email us at:

[theRXseries@randox.com](mailto:theRXseries@randox.com)





**rx**

s e r i e s

# »» RANDOX - A GLOBAL DIAGNOSTIC SOLUTIONS PROVIDER

Randox has been supplying laboratories worldwide with revolutionary diagnostic solutions for over 30 years. Our experience and expertise allow us to create a leading product portfolio of high quality diagnostic tools which offer reliable and rapid diagnosis. We believe that by providing laboratories with the right tools, we can improve health care worldwide.

## REAGENTS

Randox offers an extensive range of diagnostic reagents, giving biochemistry laboratories the opportunity to advance their routine and niche testing

The Randox reagents range goes beyond routine chemistries. At Randox we re-invest significantly in research and development to ensure we meet the ever changing needs of the laboratory. As a result, the esoteric reagents range from Randox is extensive and includes sLDL, Lipoprotein(a), H-FABP, Cystatin C, TxBCardio, Adiponectin, Bile Acids, Copper, D-3- Hydroxybutyrate, G-6-PDH, Non-Esterified Fatty Acids, Total Antioxidant Status and Zinc.

Randox Reagents provide a number of benefits for the laboratory: Cost savings through excellent stability, automated methods and standards supplied with some kits; confidence in results with high performance methods, minimal interferences and wide measuring ranges; convenience and choice with applications for over 100 biochemistry analysers; liquid ready-to-use reagents, a wide range of kit sizes and complementary controls and calibrators.

## ACUSERA

Randox is a world leading manufacturer of multi-analyte, true third party controls. Thousands of laboratories rely on us to accurately assess test system performance and ultimately empower them with the confidence required to release patient test results. With more than 390 analytes available across the Acusera range we can uniquely reduce the number of individual controls required while simultaneously reducing costs, time and storage space. A choice of formats are available, including liquid or lyophilised, ensuring flexibility and suitability for laboratories of all sizes and budgets.

Some of our principle products include Clinical Chemistry, Immunoassay, Urine, Immunology/ Proteins, Cardiac Markers and Therapeutic Drugs among others. As a primary manufacturer, Randox are also able to offer the unique service of custom made controls.

## RIQAS

Boasting over 45,000 participants and more than 360 parameters across 32 comprehensive & flexible EQA programmes, RIQAS is the largest international EQA scheme. Designed to cover all areas of clinical testing, each of our multi-analyte programmes benefit from a wide range of concentrations, frequent reporting, rapid feedback and informative yet user-friendly reports.

## BIOCHIP ARRAY TECHNOLOGY

Biochip Array Technology (BAT) is an innovative assay technology for multi-analyte screening of biological samples in a rapid, accurate and easy to use format. BAT offers highly specific tests, coupled to highly sensitive chemiluminescent detection, providing quantitative results in easy to interpret reports. Randox BAT assays offer diagnostic, prognostic and predictive solutions across a variety of disease areas including sexually transmitted infection, cardiovascular disease (CVD), familial hypercholesterolemia (FH), colorectal cancer and respiratory infection.

Contact us for more information on any of our products and services:

## Head Quarters

Randox Laboratories Ltd, 55 Diamond Road, Crumlin, County Antrim, BT29 4QY, United Kingdom

☎ +44 (0) 28 9442 2413    ✉ [marketing@randox.com](mailto:marketing@randox.com)    🌐 [randox.com/clinical-chemistry-analysers/](http://randox.com/clinical-chemistry-analysers/)

## International Offices



### AUSTRALIA

Randox (Australia) Pty Ltd.  
Tel: +61 (0) 2 9615 4640



### BRAZIL

Randox Brasil Ltda.  
Tel: +55 11 5181-2024



### CHINA

Randox Laboratories Ltd.  
Tel: +86 021 6288 6240



### CZECH REPUBLIC

Randox Laboratories S.R.O.  
Tel: +420 2 1115 1661



### FRANCE

Laboratoires Randox  
Tel: +33 (0) 130 18 96 80



### GERMANY

Randox Laboratories GmbH  
Tel: +49 (0) 215 1937 0611



### HONG KONG

Randox Laboratories Hong Kong Limited  
Tel: +852 3595 0515



### ITALY

Randox Laboratories Ltd.  
Tel: +39 06 9896 8954



### INDIA

Randox Laboratories India Pvt Ltd.  
Tel: +91 80 2802 5000



### POLAND

Randox Laboratories Polska Sp. z o.o.  
Tel: +48 22 862 1080



### PORTUGAL

Irlindox Laboratorios Quimica Analitica Ltda  
Tel: +351 22 589 8320



### PUERTO RICO

Clinical Diagnostics of Puerto Rico, LLC  
Tel: +1 787 701 7000



### REPUBLIC OF IRELAND

Randox Teoranta  
Tel: +353 7495 22600



### SLOVAKIA

Randox S.R.O.  
Tel: +421 2 6381 3324



### SOUTH AFRICA

Randox Laboratories SA (Pty) Ltd.  
Tel: +27 (0) 11 312 3590



### SOUTH KOREA

Randox Korea  
Tel: +82 (0) 31 478 3121



### SPAIN

Laboratorios Randox S.L.  
Tel: +34 93 475 09 64



### SWITZERLAND

Randox Laboratories Ltd. (Switzerland)  
Tel: +41 41 810 48 89



### UAE

Randox Medical Equipments Trading LLC  
Tel: +971 55 474 9075



### USA

Randox Laboratories-US, Ltd.  
Tel: +1 304 728 2890



### VIETNAM

Randox Laboratories Ltd. Vietnam  
Tel: +84 (0) 8 3911 0904

For technical support contact: [technical.services@randox.com](mailto:technical.services@randox.com)

